



Choose the Meter that Delivers on Every Level

TRICOR CLASSIC SERIES: TCM-028K EX

SPECIFICATIONS:

Nominal Line Size: 1" | DN25

Maximum Flow Rate: 28,000 kg/h | 1029 lb/min

Volumetric Flow Rate: 28,000 l/h | 123.3 gpm | 4227 bbl/d

Standard Accuracy: $\pm 0.1\%$ of flow rate

EX Certifications: cCSAus, ATEX, IECEx

Communication Protocol: Modbus 485

\$9,696



The Choice Is Clear... Take a closer look at TRICOR Coriolis meters from AW-Lake



Micro Motion Elite Series & 1700 Transmitter

SPECIFICATIONS:

Nominal Line Size: 1" | DN25

Maximum Flow Rate: 27,200 kg/h | 997 lb/min

Volumetric Flow Rate: 27,200 l/h | 119.4 gpm

Standard Accuracy: $\pm 0.1\%$ of flow rate

EX Certified

Communication Protocol: Modbus 485

\$20,210



Micro Motion F Series & 1700 Transmitter

SPECIFICATIONS:

Nominal Line Size: 1" | DN25

Maximum Flow Rate: 32,650 kg/h | 1200 lb/min

Volumetric Flow Rate: 32,650 l/h | 144 gpm

Standard Accuracy: $\pm 0.2\%$ of flow rate

EX Certified

Communication Protocol: Modbus 485

\$13,600



Endress + Hauser Proline Promass E 300 Series

SPECIFICATIONS:

Nominal Line Size: 1" | DN25

Maximum Flow Rate: 18,000 kg/h | 661 lb/min

Volumetric Flow Rate: 18,000 l/h | 79.3 gpm

Standard Accuracy: $\pm 0.1\%$ of flow rate

EX Certified

Communication Protocol: Modbus 485

\$13,412

OTHER REASONS TO CHOOSE AW-LAKE:

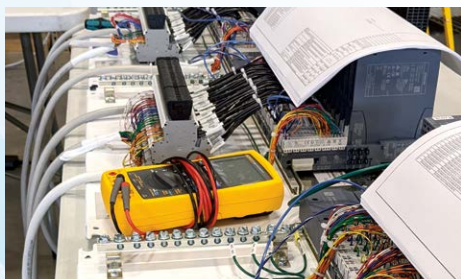
- **US Company & German Precision Manufacturing:** AW-Lake is a US company and our Coriolis meters are manufactured by our sister company in Germany.
- **Exceptional Design:** Meters were designed by 2 patent-holding Coriolis experts.
- **Fast Lead Times:** With meters assembled in the US, we are able to build and ship meters within 2-4 weeks.
- **Excellent Customer Service:** Our customer service team is dedicated to providing personalized assistance, quick response times, and a focus on your satisfaction.



Your Partner in Process Excellence

At Cross Process Solutions, we're committed to delivering high-quality engineered solutions for the Process Industry. With our focus on systems integration, instrumentation, valves, and other solutions, we collaborate closely with our customers throughout the entire process lifecycle.

As an authorized solutions partner, recognized systems integrator, manufacturer's representative, and value-added distributor, we've established lasting partnerships with industry-leading manufacturers to provide the best service possible to our customers throughout the Southeast and mid-Atlantic.



We can size, calibrate, repair, and Integrate these meters to your control and data logging systems.

Our extensive experience and expertise enable us to provide innovative solutions that drive efficiency, improve quality, and reduce risk in process facilities. And we can bring those same services to your process facility, too.

