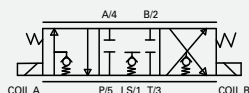


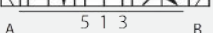
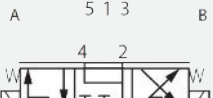
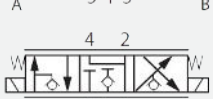
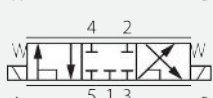
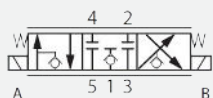
# Compact, precise proportional control



**Danfoss ESVL9 with integrated check valve offers precise proportional control in a compact package.**



Other spool options available



With an impressively broad portfolio of cartridge valves, Danfoss gives you more options and more ways to solve customer challenges. Danfoss offers a wide range of pressure and flow rates, and options that stand up to extreme environments. As customers transition from on/off to proportional control, Danfoss has made investments to win with the ESVL9 five-way, three-position proportional solenoid valve.

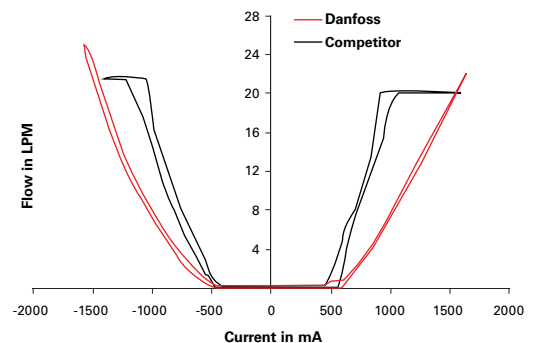
Danfoss' ESVL9 valve is available in size 10, and features a patent-pending integrated load sense check valve option. By integrating the external check valve in the main cartridge, ESVL9 valves enable a 21% manifold size reduction compared to the external check valves options used with five-ported directional control valves today.

## Features

- Industry standard cavity tool
- IP69K ToughCoils™ compatible
- Highly engineered components
- Designed for optimized linearity and hysteresis
- Compact design with low pressure drop
- Optional manual override
- Integrated LS check feature in standard cavity

## Benefits

- Optimized flow forces: critical to control of the spool and providing stable, even and controllable proportional control
- Optimized jet: controls the metering of flow to the spool
- Dual spring design: ESVL9 valve utilizes two springs to control metering of the spool while the competition uses one
- Advanced engineering: 30+ design cases with full CFD analysis resulting in optimized geometry



## Ratings and specifications

Performance data is typical with fluid at 21.8 cSt (105 SUS) and 49 °C (120 °F)

Typical application pressure (all ports)	250 bar (3,600 psi)
Max flow	23 L/min (6 gal/min)
Internal leakage	250 cc <sup>3</sup> /min (15 in <sup>3</sup> /min) max @ 210 bar (3,000 psi)
Temperature range	-40 °C to 120 °C
Cavity	C-10-55
Rated burst pressure	750 bar (10,600 psi) per NFPA/T2-6-1 R2-2000

Danfoss Power Solutions, Nordborgvej 81, 6430 Nordborg, Denmark, Tel. +45 74 88 22 22, Fax +45 74 65 25 80  
www.danfoss.com, E-mail: info@danfoss.com

Any information, including, but not limited to information on selection of product, its application or use, product design, weight, dimensions, capacity or any other technical data in product manuals, catalogues descriptions, advertisements, etc. and whether made available in writing, orally, electronically, online or via download, shall be considered informative, and is only binding if and to the extent, explicit reference is made in a quotation or order confirmation. Danfoss cannot accept any responsibility for possible errors in catalogues, brochures, videos and other material. Danfoss reserves the right to alter its products without notice. This also applies to products ordered but not delivered provided that such alterations can be made without changes to form, fit or function of the product. All trademarks in this material are property of Danfoss A/S or Danfoss group companies. Danfoss and the Danfoss logo are trademarks of Danfoss A/S. All rights reserved.