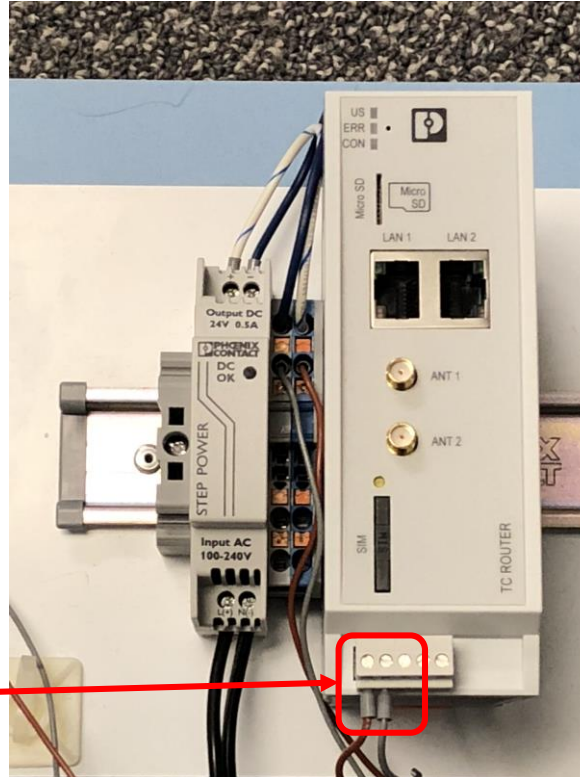


TC Router Setup Guide



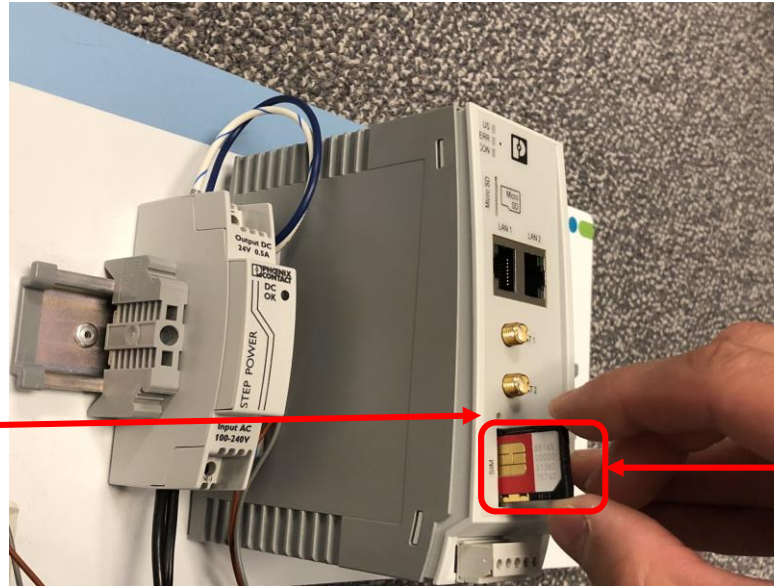
TC Router Setup: Connect Power

1. Connect the TC Router to a 24V DC power supply



TC Router Setup: Insert SIM Card

1. Remove SIM Card holder with push-pin or paperclip
2. Insert SIM card with valid data plan into SIM Card holder
3. Insert SIM card into TC Router

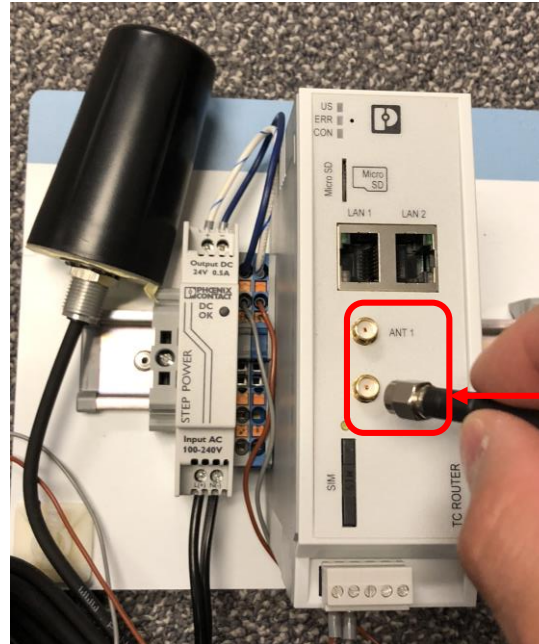


TC Router Setup: Attach Antenna

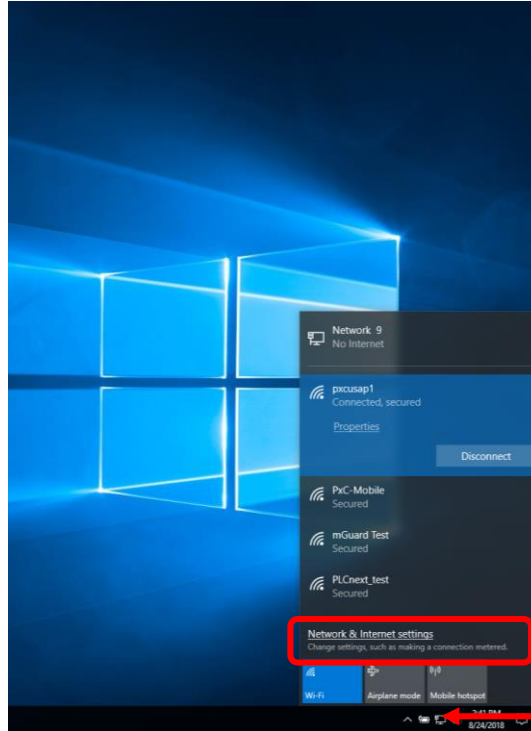
1. Attach at least one antenna to ANT 1
2. Attach a second antenna to ANT 2 for diversity

Antenna Part Numbers:

- 2702273 (5m Cable)
- 2702274 (0.5m Cable)



TC Router Setup: Change IP Address



1. Click network icon in bottom right corner
2. Click "Network & Internet Settings"

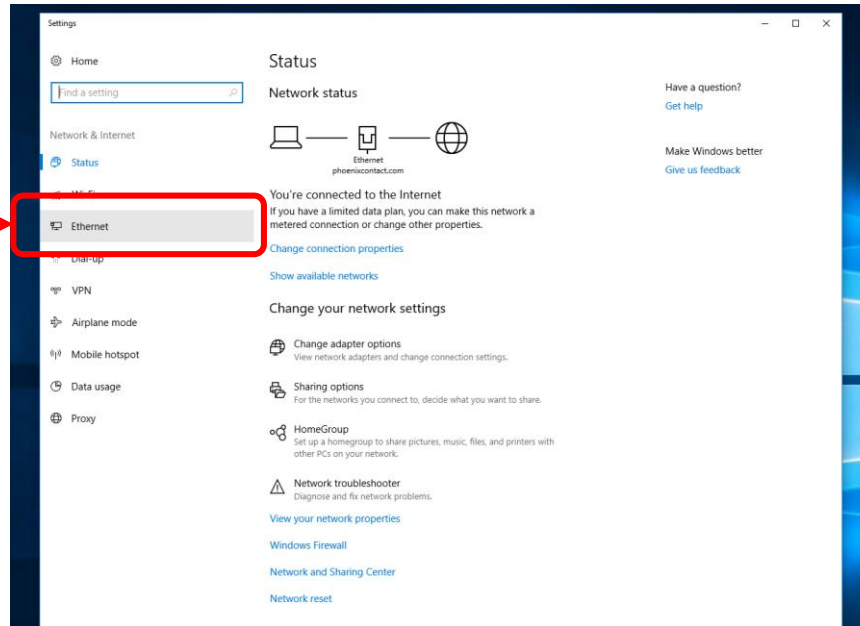
2

1

TC Router Setup: Change IP Address

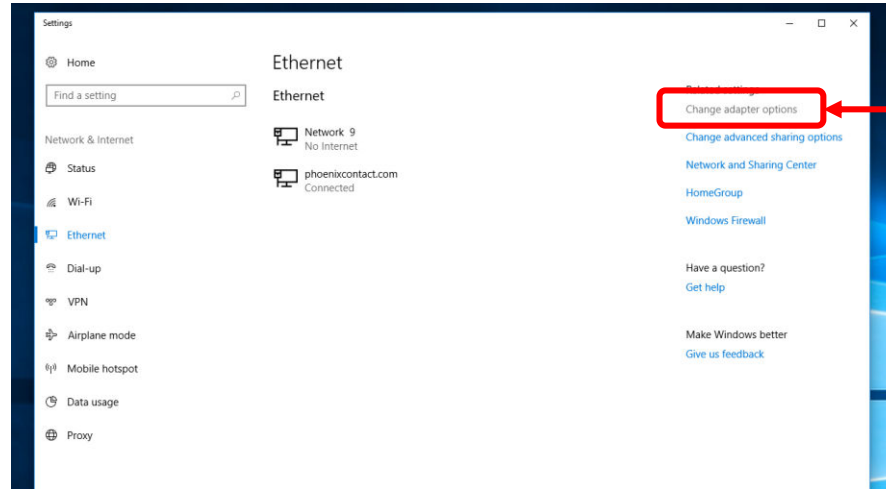
1. Select Ethernet

1



TC Router Setup: Change IP Address

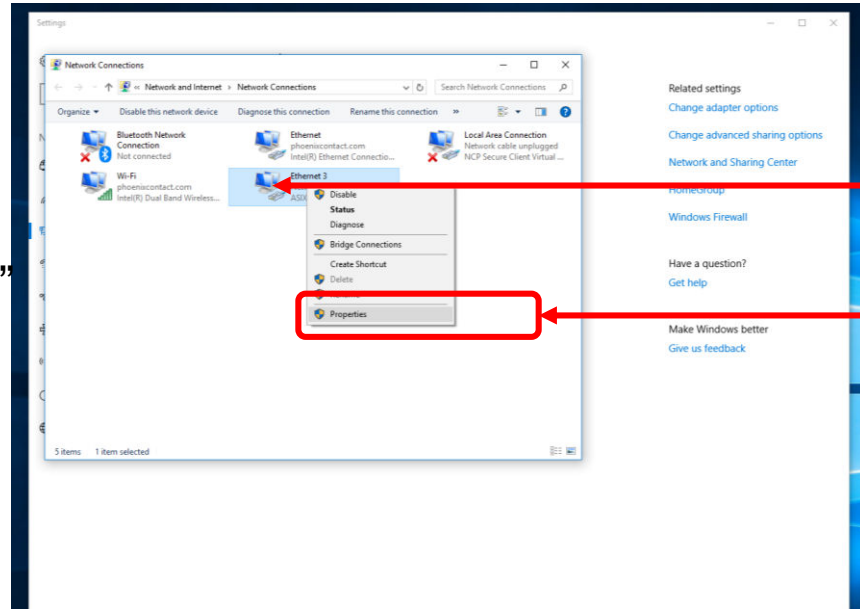
1. Select “Change Adapter Options”



1

TC Router Setup: Change IP Address

1. Right click on the Ethernet port connected to the TC Router
2. Select "Properties"



1

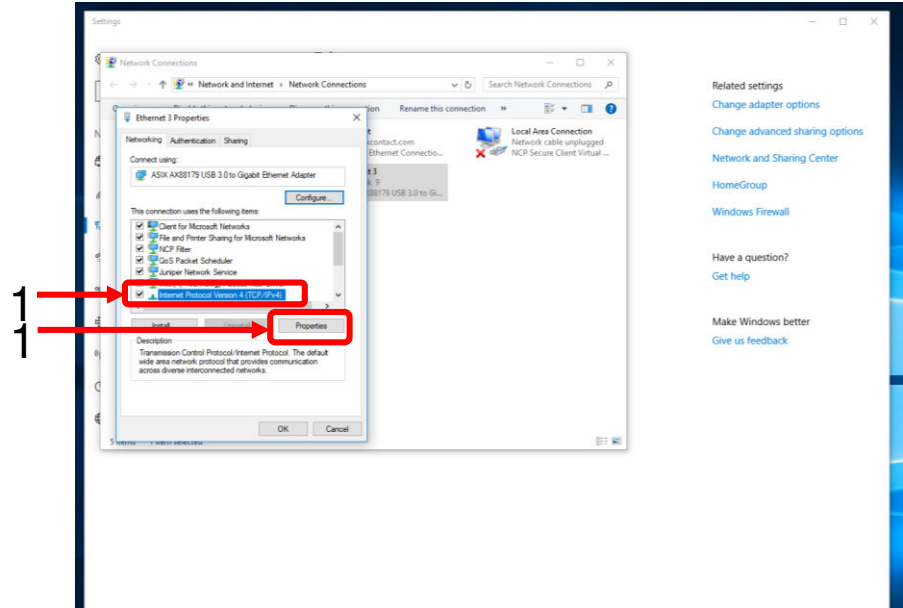
2

TC Router Setup: Change IP Address

1. Double-click “Internet Protocol Version 4 (TCP/IPv4)”

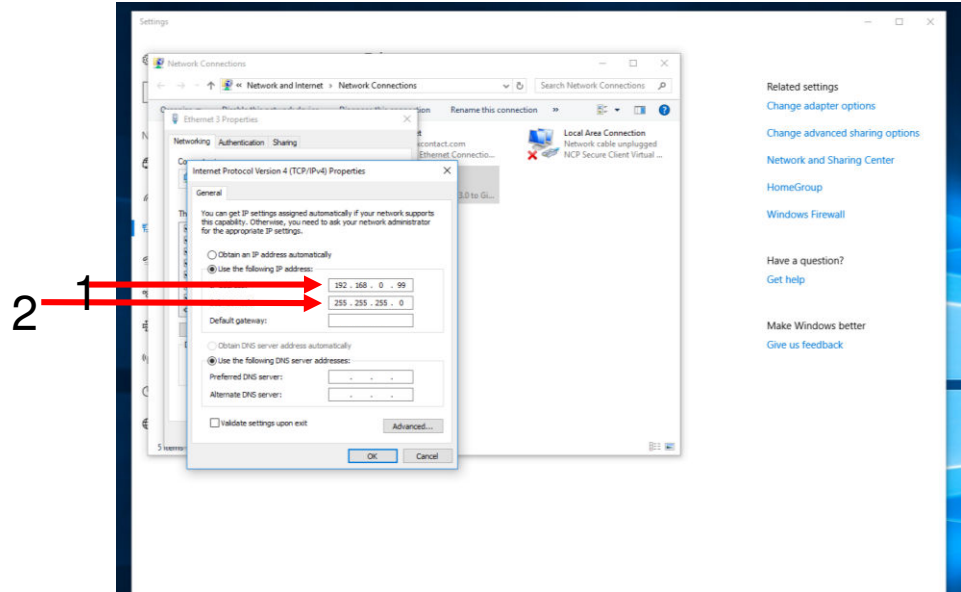
Alternatively

1. Select “Internet Protocol Version 4 (TCP/IPv4)” and click Properties



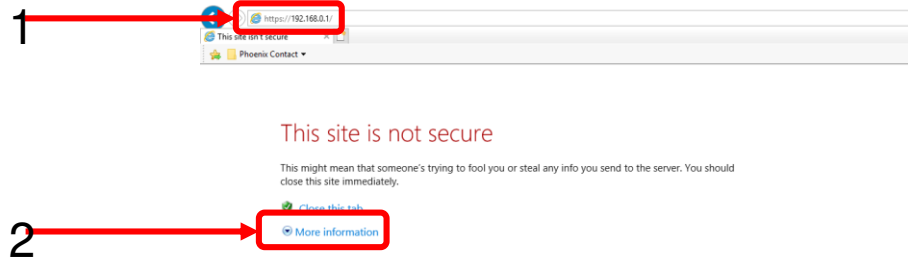
TC Router Setup: Change IP Address

1. Change IP Address to 192.168.0.X (X Can be any number between 0 and 255, **EXCEPT 1**)
2. Set the Subnet Mask to 255.255.255.0



TC Router Setup: Login

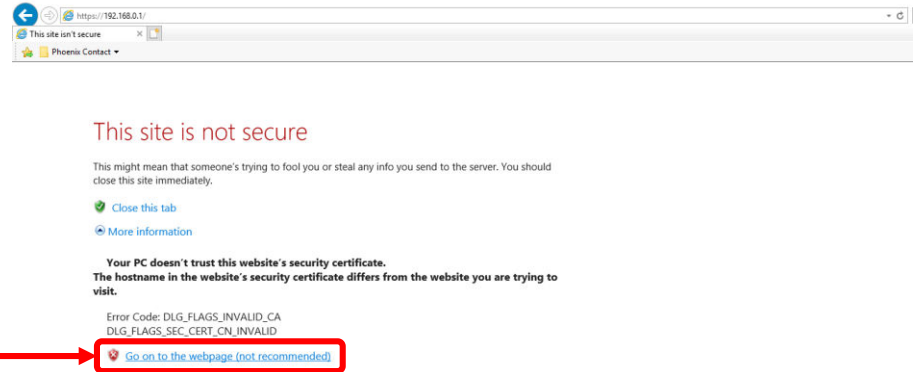
1. Open a web browser and enter <https://192.168.0.1>
2. If you get a security warning, Click “more information”



TC Router Setup: Login

1. Ignore the security warning and select “Go on to the webpage (not recommended).”

Have no fear. This step is necessary and will not put your computer at risk

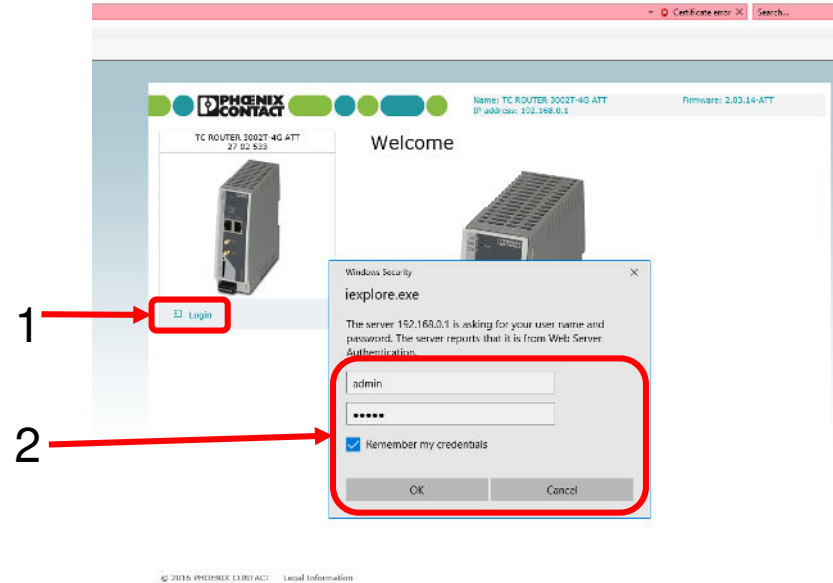


TC Router Setup: Login

1. Click “Login”
2. Enter login credentials.

Username: admin
Password: admin

Click “OK”



TC Router SIM Setup

1. Click the Wireless Network dropdown menu
2. Select SIM
3. Change Country to USA (310) and click Set
4. If your cellular provider **did not** provide you with a custom APN:
 - a) Set the APN to Managed Internet APN.
5. If your cellular provider did provide with a custom APN
 1. Set the APN to Customer APN and enter the corresponding APN code
6. Click Apply

The screenshot shows the web interface of a TC Router 3002T-4G ATT. The top bar displays the Phoenix Contact logo, the router name, and the firmware version (2.04.11). The main content area is divided into two sections: a left sidebar with a tree view of configuration options and a right main panel for the 'SIM' configuration.

Left Sidebar:

- Device Information
- Status
- Local network
- Wireless network
 - Radio setup
 - SIM (highlighted with a red arrow and number 2)
 - SMS configuration
 - Packet data setup
 - Static routes
 - DynDNS
 - Connection check
 - Monitoring

Right Panel (SIM Configuration):

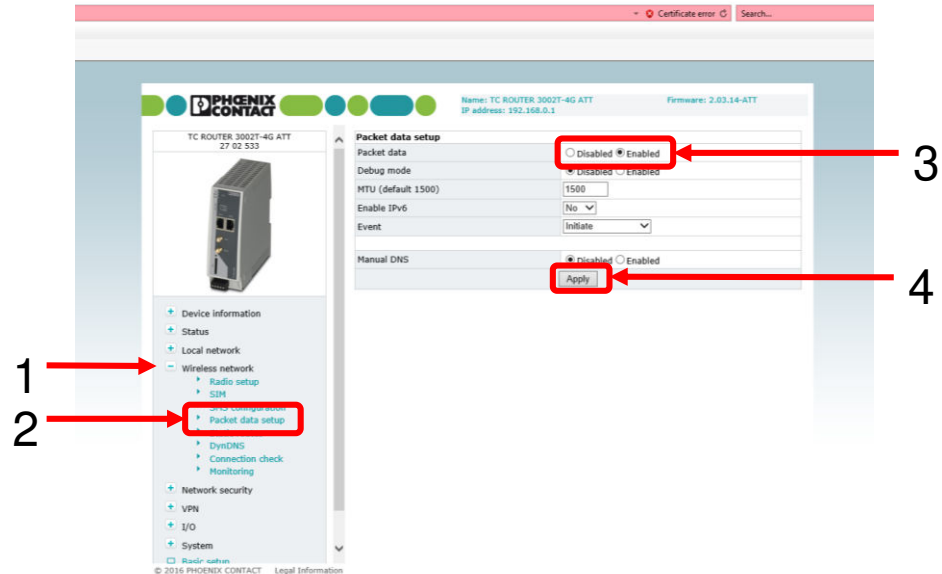
- Country:** A dropdown menu showing 'USA (310)' is highlighted with a red box and a red arrow (number 3). A 'Set' button is next to it.
- PIN:** An empty text input field.
- Roaming:** Radio buttons for 'Disabled' and 'Enabled' (selected).
- Provider:** A dropdown menu showing 'Auto'.
- managed internet APN:** A dropdown menu showing 'broadband' is highlighted with a red box and a red arrow (number 4).
- Authentication:** A dropdown menu showing 'None'.
- Apply:** A button at the bottom right is highlighted with a red arrow (number 5).

Annotations:

- Red arrow 1 points to the 'Wireless network' dropdown in the left sidebar.
- Red arrow 2 points to the 'SIM' option in the left sidebar.
- Red arrow 3 points to the 'Country' dropdown menu.
- Red arrow 4 points to the 'managed internet APN' dropdown menu.
- Red arrow 5 points to the 'Apply' button.

TC Router Setup: Enable Packet Data

1. Click the Wireless Network dropdown menu
2. Select Packet data setup
3. Click the “Enabled” radio button across from Packet data
4. Click Apply



TC Router Setup: Verify Signal

1. Click the Status dropdown menu, and select Radio
2. Check the signal level. A strong signal is between -50 and -80 dbm
 1. Move the TC Router as necessary to achieve a better signal
3. Verify Packet data is online



Congratulations your TC Router is connected to the cellular network!



The screenshot shows the web interface of a TC Router 3002T-4G ATT. The 'Radio status' section is highlighted with a red box, showing the following information:

Radio status	
Provider	AT&T
Network status	Registered online
Signal level	-67 dBm
Packet data	HSDPA/UPA online
Local area code	0894
Cell ID	0894800

A red arrow points to the 'Status' menu item in the left sidebar, which is also highlighted with a red box. The 'Status' menu item is under the 'Device information' section.

2,3

TC Router Setup: Troubleshooting

If the TC router is offline or does not have a strong signal after setup, try rebooting the Router

1. Click the System dropdown menu
2. Select Reboot
3. Click Reboot NOW
4. Wait ~2 minutes and check the signal

