



CORDIS CP1 DYNAMIC ELECTRONIC PRESSURE CONTROLS



Precise, linear pressure control within a closed-loop system with ultra high resolution and repeatability

Medium	Clean, dry, non-corrosive gases
Material, Wetted	<i>Sensor:</i> Polyamide, <i>Manifold:</i> Anodized Aluminum, <i>Valves:</i> please refer to the DVP or EVP specifications
Valve Function	Normally-Closed Proportional
Calibrated Range	0 to 0.5 psig min. 0 to 150 psig max.
Typical Flow	2.7 to 65 l/min ($\pm 10\%$ @ 100 psig)
Typical Response Time	<20 ms (application dependent)
Accuracy	$\pm 0.25\%$ of Full Scale
Resolution	≤ 5 mV
Max. Hysteresis	$\pm 0.05\%$ of Full Scale
Linearity	$\pm 0.05\%$ BFSL
Porting	#10-32, Manifold, M5
Operating Temperature	<i>Proportional Valve:</i> 32° to 120°F
Mounting Attitude	Any
Filtration	40 micron (recommended)
More Details	clippard.com/link/cordis

Known for reliability, innovation and focus on miniature pneumatics, Clippard's Cordis Pressure Controllers utilize the proven EVP and DVP proportional valve series allowing for steady, accurate and repeatable downstream pressure control as demand or process changes. The result, a very precise linear pressure control within a closed-loop system providing ultra-high resolution and repeatability.

The Cordis uses a microcontroller, an internal pressure sensor, and a Clippard proportional valve. The inlet valve is connected to the moderately regulated supply pressure. Once a command is increased, the proportional valve opens up to allow supply pressure to pass over the sensor element which provides an active feedback for the microcontroller to satisfy the set point in the process. If at any point the sensor detects a value higher than the set point, the proportional valve closes and allows process to consume the remaining downstream pressure.

Consult Clippard for application assistance and product specifications.

- Smooth linear control
- Integrated internal feedback
- Multiple flow configurations
- Dynamic proportional pressure control
- Non-pulsing proportional fill
- Customizable pressure ranges and mounting options
- Multiple inert gas compatible
- Customizable Calibrated Ranges

Equipment used for test and calibration is NIST Traceable



Clippard's proven DVP or EVP proportional valves provide fast, stable control of pressure



ORDERING INFORMATION

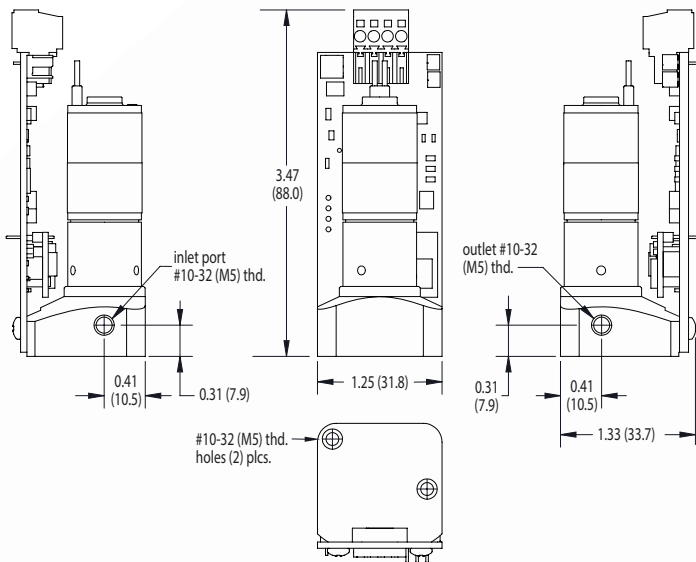
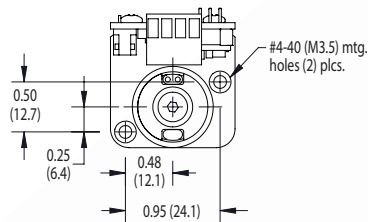
Model	Porting	Mount	Signal/Command	Calibrated Pressure Range	Min. Volume/Flow @ Max. Pressure*
CP1-C	Pressure	I Imperial	F 0 to 5 VDC	-A 0 to 1 psig	A $\geq 0.25 \text{ in}^3 / 2.7 \text{ l/min}$
	Control	M Metric	E 0 to 10 VDC	-B 0 to 5 psig	B $\geq 0.50 \text{ in}^3 / 6.7 \text{ l/min}$
				-C 0 to 15 psig	C $\geq 1.00 \text{ in}^3 / 25.0 \text{ l/min}$
				-D 0 to 30 psig	D $\geq 2.00 \text{ in}^3 / 65.0 \text{ l/min}$
				-F 0 to 100 psig	F $\geq 1.00 \text{ in}^3 / 32.0 \text{ l/min}$
				-G 0 to 150 psig	
				-I 0 to 0,5 bar	
				-J 0 to 1 bar	
				-K 0 to 2 bar	
				-M 0 to 7 bar	
				-N 0 to 10 bar	

Consult Clippard for availability of non-standard commands and other options.

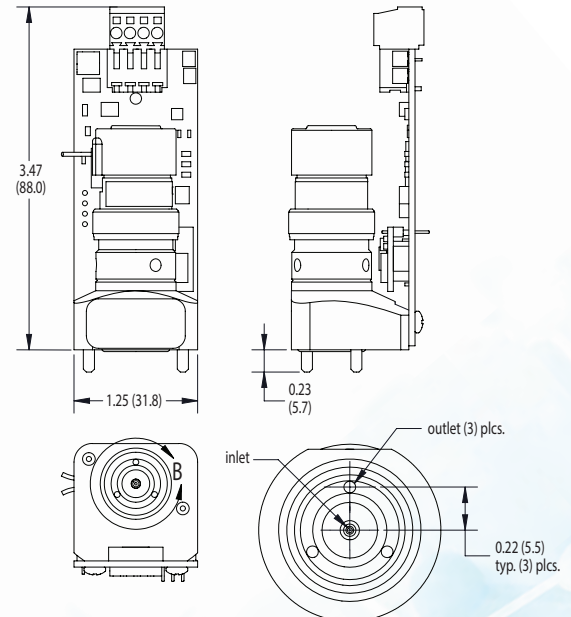
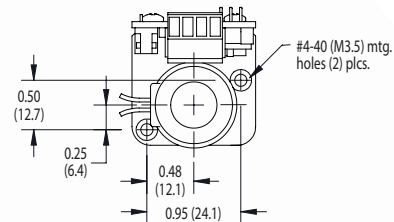
Accessory
CPSH-C1 M8 Female Mating Connector
 Accessory Cable, 36"

Example Part No. CP1-CIIE-BA

In-Line Mount



Manifold Mount



PROFESSIONALLY DISTRIBUTED BY:



877.578.1639 CROSSCO.COM

877-245-6247 | clippard.com

CLIPPARD INSTRUMENT LABORATORY, INC. • ISO 9001 • TDS 1.23
 For warranty and disclaimer information, visit clippard.com/warranty

