



TurnCheck™ Series-6

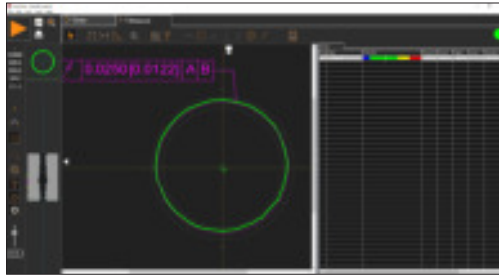
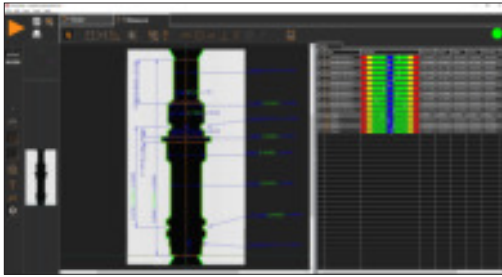
TurnCheck™ Series-6 systems are precision optical shaft measuring instruments designed for shop floor environments. Rugged and reliable, TurnCheck Series-6 has a completely telecentric, large field of view optical system that accommodates parts with shaft diameters up to 60 mm.

- **Measure Within Seconds** – Shaft lengths up to 300 mm.
- **Collimated LED illumination** – Reduces distortion to provide superior image quality and improved measurement of critical dimensions of all feature types.
- **Built-in Thread Library** – Optional  $\pm 12.5^\circ$  of motorized helix angle that automatically adjusts based on thread value.

## High-Performance Benchtop Shaft Measurement System



# TurnCheck™ Series-6

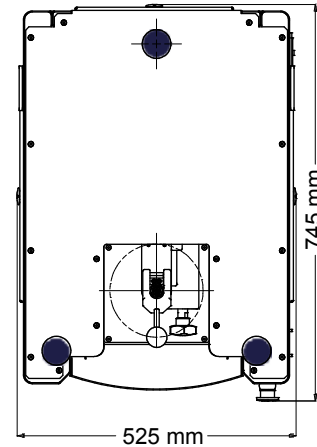
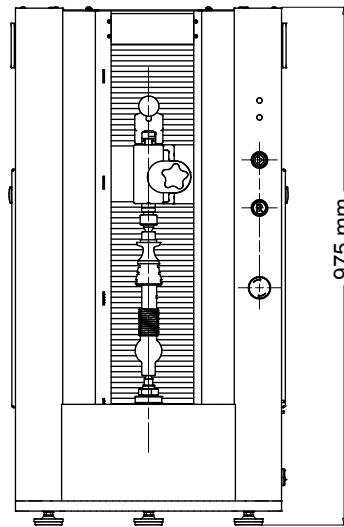


## Measurement & Analysis Capabilities:

- Automatic data point generation and simple feature extraction
- Advanced image analysis technology
- Program using DXF CAD models
- True high definition of part image display
- Optional SmartProfile® software for 3D analysis and advanced GD&T

## Rugged, Easy To Use Design:

- Easy loading – one-handed tailstock operation
- Built-in light curtain to safeguard the operator during automatic measurement
- Additional optional workholding kits available for parts that do not have centers



System Weight: 150 kg  
Shipping Weight: 200 kg

Series-6	6 30
<b>Measurement Capacity &amp; Machine Size*</b>	
Vertical Measuring Range	300 mm
Maximum Diameter Measuring Range	60 mm
Maximum Part Size	170∅ mm x 300L mm
Machine Size	525 mm x 745 mm x 975 mm
* Between standard centers.	
<b>System Performance</b>	
Rotational Scanning Speed	60 RPM
Vertical Scale Resolution	0.1 µm
Video Edge Resolution	0.5 µm
Rotational Scale Resolution	0.001 degrees
Rated Spindle Load	20 kg
Motorized Helix Angle Adjustment (optional)	±12.5 degrees
<b>Accuracy**</b>	
Diameter Measurement	1.8 + D/100 µm
Diameter Repeatability	1.0 µm
Length Measurement	3.5 + L/150 µm
Length Repeatability	3.0 µm
<b>Rated Environment &amp; Facilities</b>	
Power Requirements	100-120 VAC or 200-240 VAC, 50/60 Hz, 1-Phase, 650 W
Safe Operating Environment	15-30 °C, non-condensing
Rated Environment	Temperature 18-22 °C; 30-80% humidity; vibration <0.001g below 15 Hz

\*\*Where D, L = measuring length in mm. Applies to thermally stable system in rated environment. Maximum rate of temperature change: 1 °C/hour. Maximum vertical temperature gradient: 1 °C/meter. Applies to a work piece with its center of mass located on the spindle axis.



World Headquarters: Rochester, NY, USA • 585.544.0400 • www.ogpnet.com

OGP Shanghai Co, Ltd: Shanghai, China  
86.21.5045.8383/8989 • www.smartscope.com.cn

OGP Messtechnik GmbH: Hofheim-Wallau, Germany  
49.6122.9968.0 • www.ogpmesstechnik.de

Optical Gaging (S) Pte Ltd: Singapore • 65.6741.8880 • www.smartscope.com.sg