

Portavo 907 Multi



Multi-parameter portable meter for offline sensor calibration & diagnostics

The Portavo 907 Multi is an invaluable multi-purpose tool for any analyzer or lab technician. Designed for use inside of plant operations as well as in the shop or lab, this portable meter measures pH, ORP, conductivity, and oxygen. The Portavo 907 Multi is available as a single or dual input meter.

This versatile instrument provides portable field measurements, sensor diagnostics, data logging, and offline sensor calibration. An intuitive menu navigation, the automatic sensor calibration function, and easy to understand sensor diagnostics make the Portavo 907 Multi simple to implement in any instrument/analyzer shop or lab.

FEATURES & BENEFITS

- For Memosens sensors measuring pH, ORP, conductivity, and oxygen — also available with analog sensor inputs
- Two Memosens sensors, or one Memosens sensor and one analog sensor can be displayed at the same time depending on the model selected.
- More than 1,000 hours of operation using four AA batteries
- Optional rechargeable Li-ion battery pack
- High resolution color graphic display
 - Readable in direct sunlight
 - Sensoface: sensor status at a glance
 - Sensor Network Diagram for quick analysis of sensor condition
- Sensor calibration
 - Automatic calibration function up to 3 points
 - Manual calibration with adjustable buffer values
- 10,000 point data logger - In a dual input configuration, both inputs as well as diagnostic data are logged at the same time.
- USB interface for connection to Paraly 12 Software for data visualization and collection
- Rugged housing
 - NEMA 4X
 - High impact resistance
- No need for re-calibration of the Portavo — digital meter, there is no drift.

PORTAVO 907 MULTI PORTABLE METER ANATOMY

CONNECTION PORTS

- 1- Quiver for sensor storage or calibration
- 2 - Micro-USB connection for charging or data transfer
- 3 - Memosens sensor connection
- 4 - External temperature detector (analog only)
- 5 - Additional sensor input (analog or digital) - model dependent

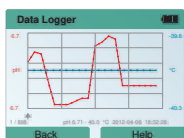


COLOR DISPLAY

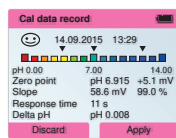
Backlit LCD Screen

- Measured value
- Measured temperature
- Sensoface: quick indication of the health of the measurement loop. As simple as 😊 good, ☹️ bad.
- Sensor type icon - Memosens or analog
- Battery life indication
- Soft key designation

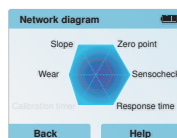
Diagnostics:



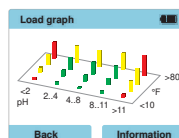
Data Logger



Cal Data Record



Network Diagram



Load Graph



FIELD AND BENCH-TOP COMPATIBILITY

Hook and Protective Cover

Adjust the hook to allow for either setup in the shop/lab or for convenience in the field.