

VRU

Vacuum Rotary Union



Industry-specific applications



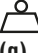
The VRU Series Vacuum Rotary Union, with its robust and lightweight design, provides a direct connection between the robot and the gripper, while also allowing an external vacuum supply to the gripper.

Its continuous rotation system avoids coiling of the hose and eliminates force constraints when used with collaborative robots.

Advantages

- Compact and lightweight
- Excellent mechanical resistance
- Easy integration: Mounting interface: ISO 9409-1-50-4-M6
- Continuous rotation
- Ideal for cobotics

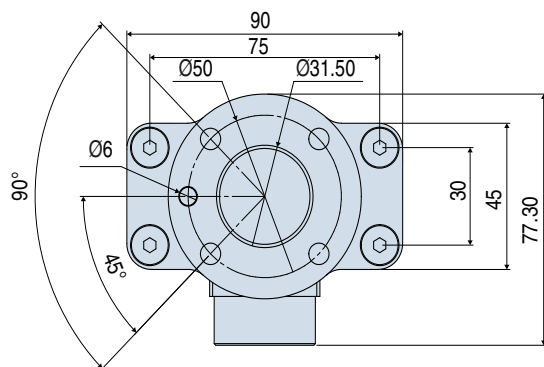
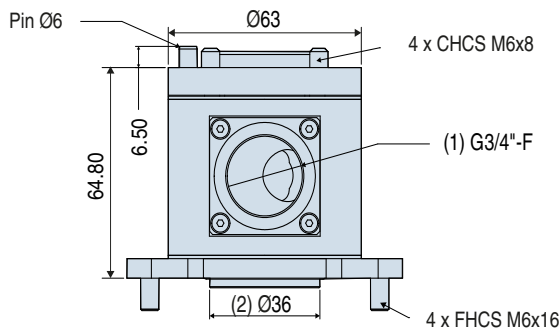
Characteristics

Model	Flow Rate (SCFM)	Nominal Flow (m ³ /h)	Connection	 (g)
VRU34A50	52.97	90	G3/4"-F	440

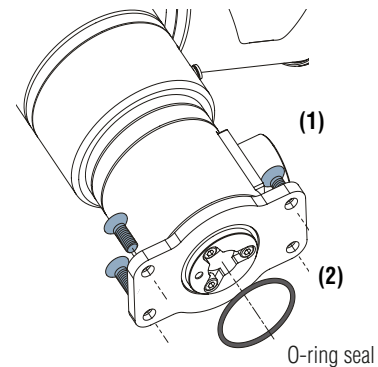
Specifications

Materials	steel - aluminum - POM - brass - NBR nitrile.
Temperature range	From 14 to 122 °F

Dimensions



Note: All dimensions are in mm.
The values represent the average characteristics of our products.



- (1) Vacuum supply source
(2) Vacuum outlet



To order please specify: VRU34A50